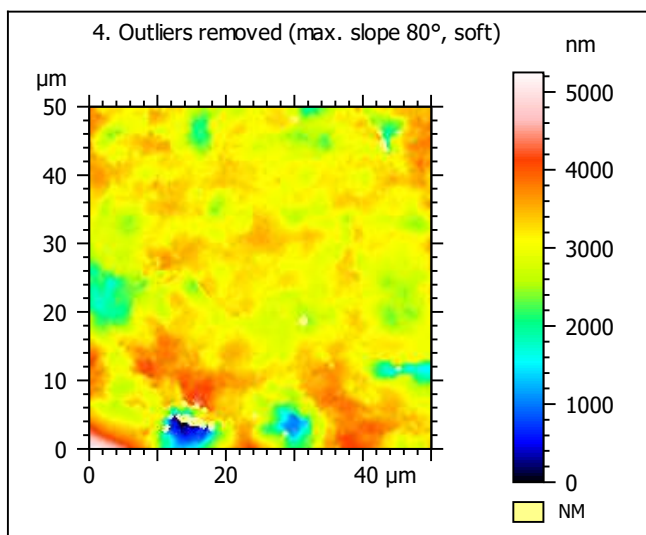
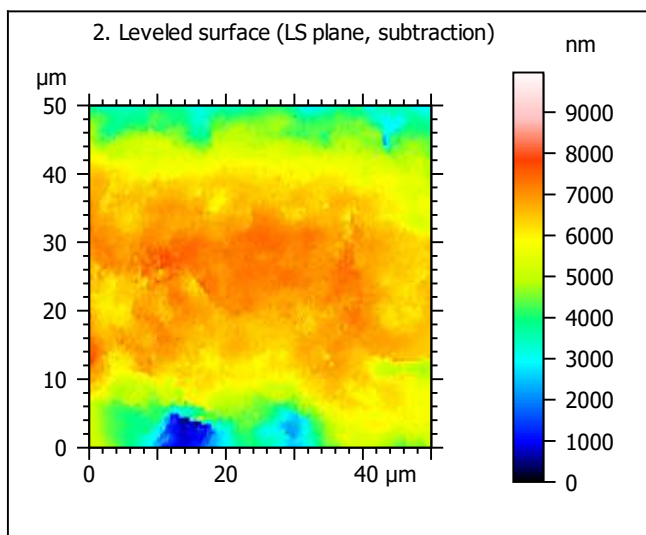
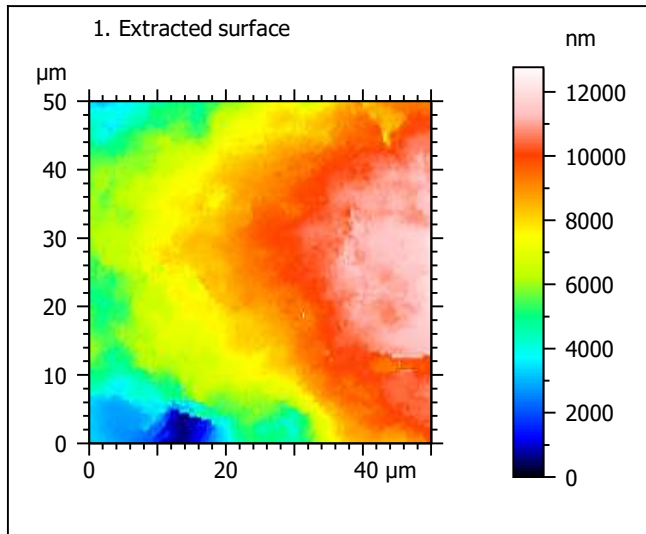
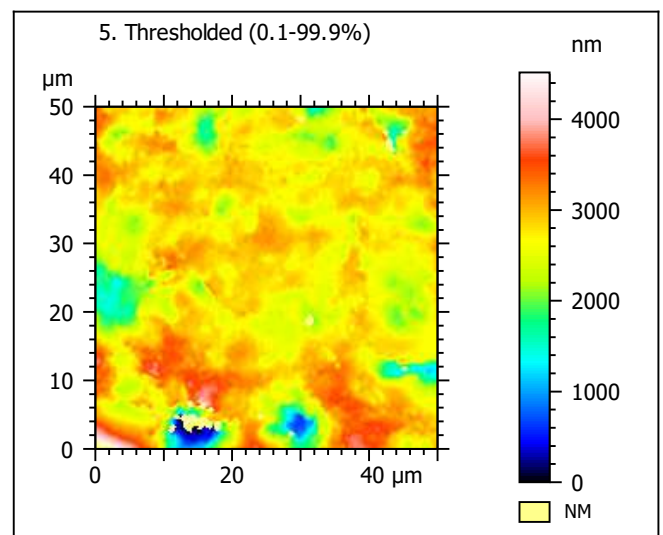
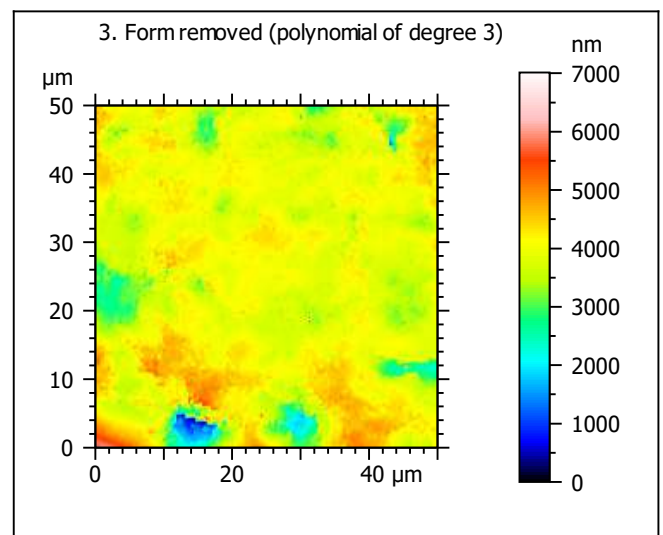


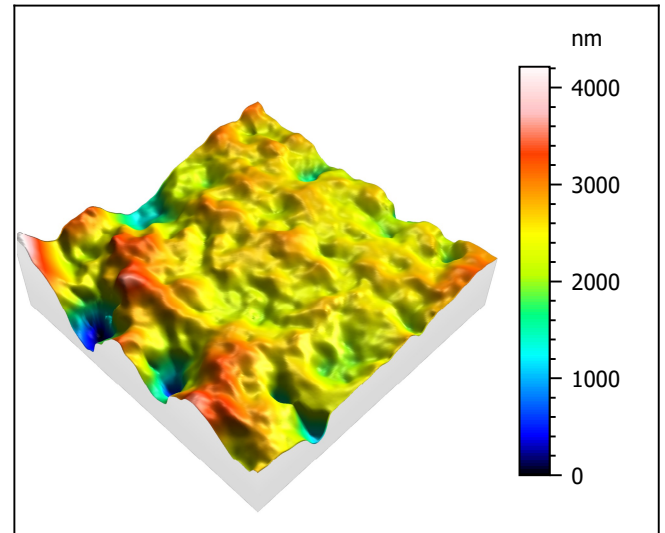
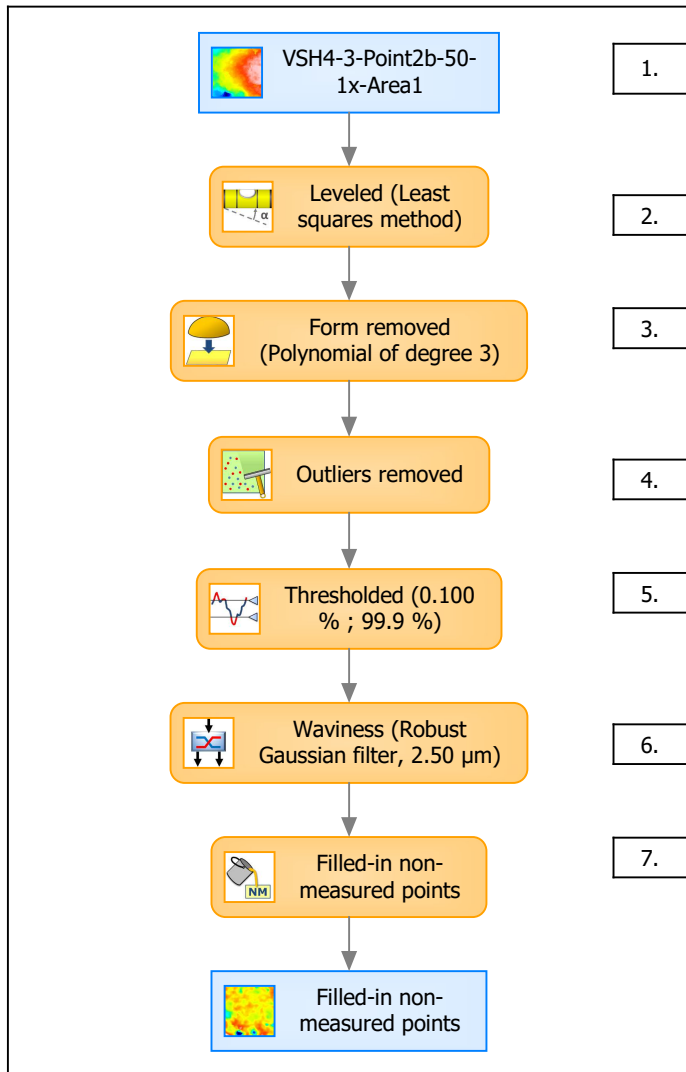
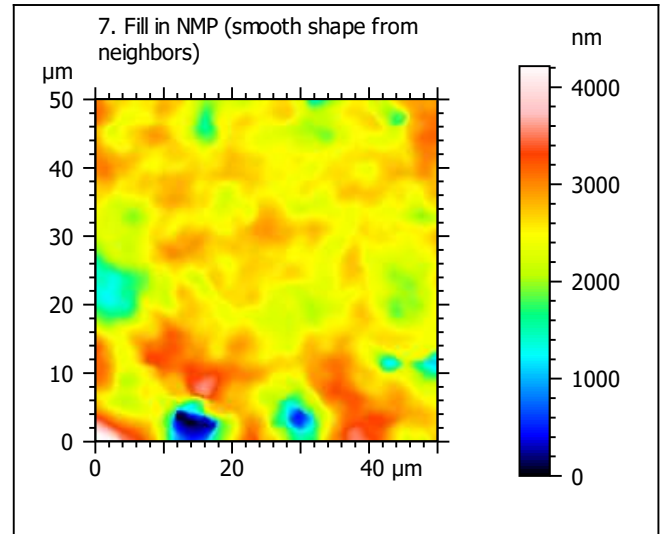
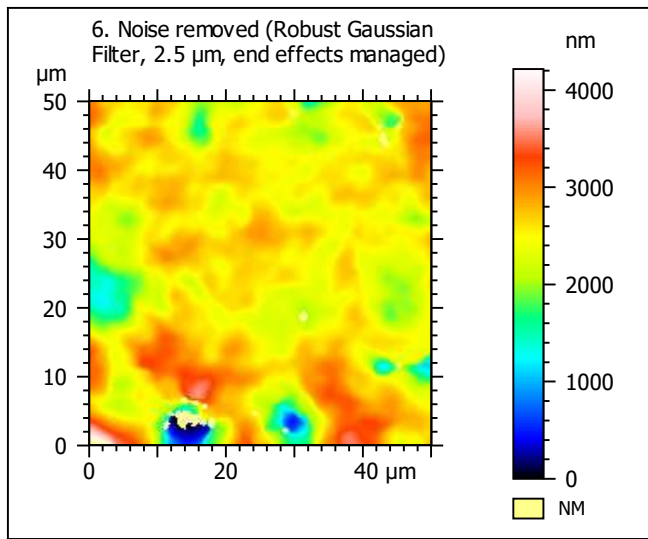
Template to process all extracted 50x50 μm surfaces, acquired with the LEXT 4000 with the 50x/0.95 objective at 1x zoom

A. Processing



Identity card			
Name:	VSH4-3-Point2b-50-1x-Area1		
File path:	D:\Data\Ant...\VSH4-3-Point2b-50-1x-Area1.sur		
Axis:	X		
Length:	50.0	μm	
Size:	201	points	
Spacing:	0.250	μm	
Axis:	Y		
Length:	50.0	μm	
Size:	201	points	
Spacing:	0.250	μm	
Axis:	Z		
Length:	12766	nm	
Size:	6453	digits	
Spacing:	1.98	nm	
NMP ratio:	0.00 % (0 Pts)		





Identity card			
Name:	VSH4-3-Point2b-50-1x-Area1 > Leveled (Leas...		
Axis:	X		
Length:	50.0	μm	
Size:	201	points	
Spacing:	0.250	μm	
Axis:	Y		
Length:	50.0	μm	
Size:	201	points	
Spacing:	0.250	μm	
Axis:	Z		
Length:	4216	nm	
Size:	2131	digits	
Spacing:	1.98	nm	
NMP ratio:	0.00 % (0 Pts)		

Analyses:

8. ISO 25178

9. Furrow

10. Texture isotropy and direction

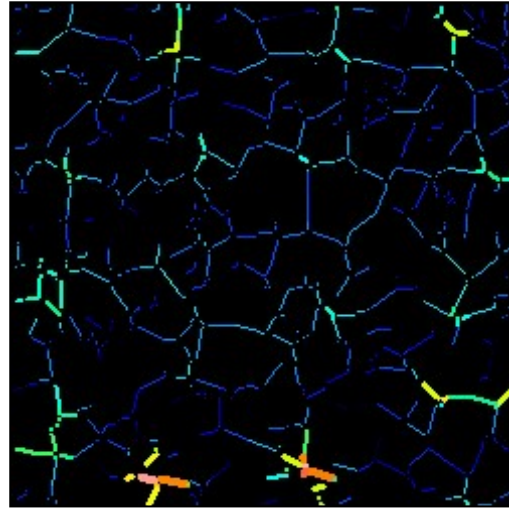
11. SSFA

B. Analyses

8. ISO 25178-2 parameters on surface #7

ISO 25178		
Height Parameters		
Sq	426	nm
Ssk	-1.45	
Sku	9.33	
Sp	1723	nm
Sv	2493	nm
Sz	4216	nm
Sa	282	nm
Functional Parameters		
Smr	2.54	%
Smc	436	nm
Sxp	1120	nm
Spatial Parameters		
Sal	4.12	μm
Str	0.652	
Std	126	°
Hybrid Parameters		
Sdq	0.251	
Sdr	2.66	%
Functional Parameters (Volume)		
Vm	0.022	μm ³ /μm ²
Vv	0.457	μm ³ /μm ²
Vmp	0.022	μm ³ /μm ²
Vmc	0.262	μm ³ /μm ²
Vvc	0.379	μm ³ /μm ²
Vvv	0.078	μm ³ /μm ²

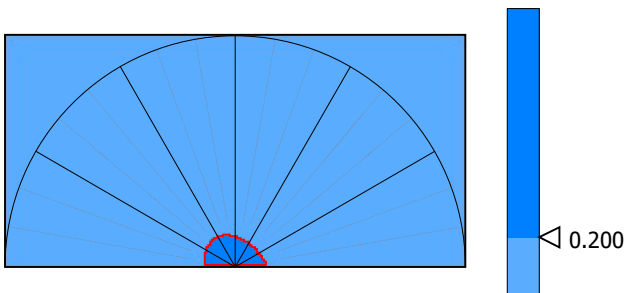
9. Furrow analysis surface #7



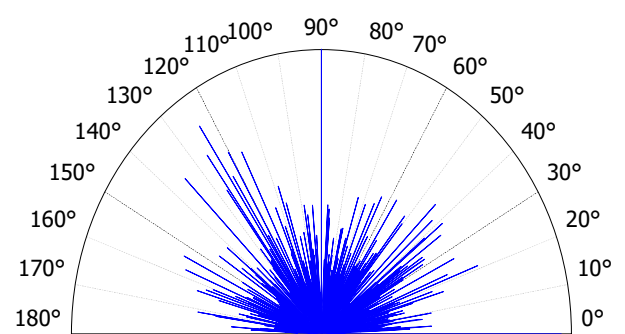
All furrows are shown.

Parameters	Value	Unit
Maximum depth of furrows	1642	nm
Mean depth of furrows	365	nm
Mean density of furrows	2525	cm/cm2

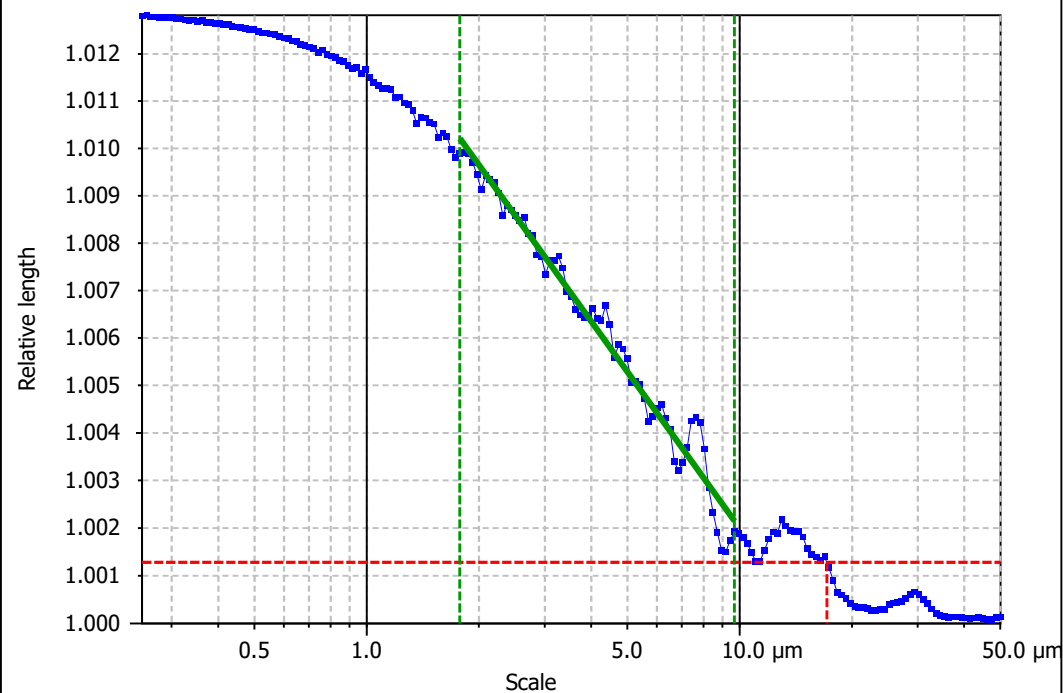
10. Texture isotropy and direction on surface #7



Parameters	Value	Unit
Isotropy	70.4	%
Periodicity	*****	%
Period	*****	μm
Direction of period	*****	°

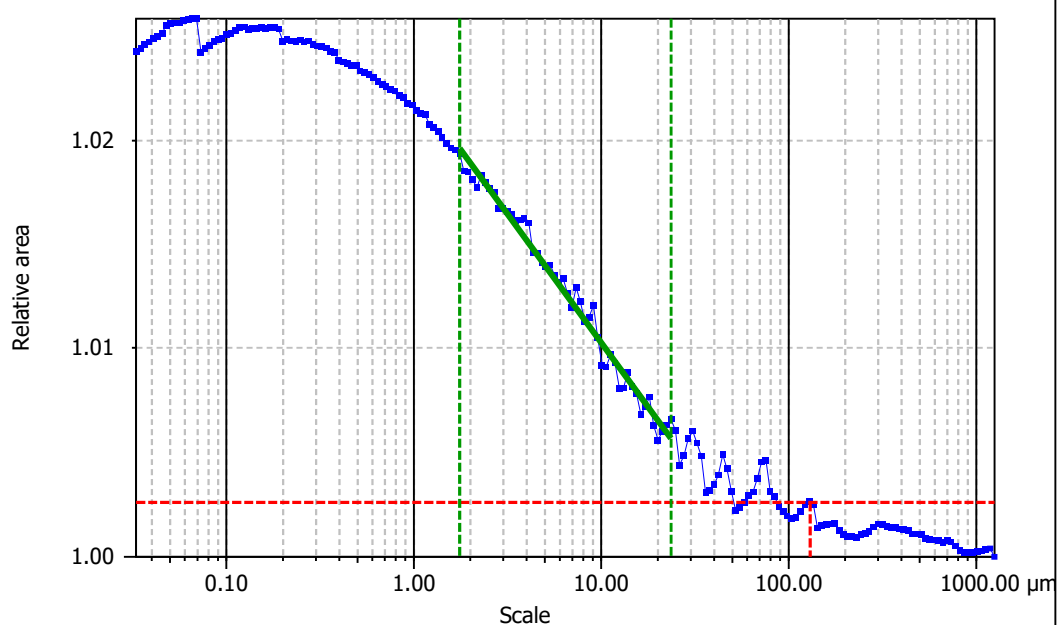


Parameters	Value	Unit
Isotropy	65.2	%
First Direction	90.0	°
Second Direction	0.199	°
Third Direction	124	°

**Information**

Method Length-scale (rows)

Parameters	Value	Unit	Comment
epLsar	0.0175		(1.8 μm, 5°)

**Information**

Method Area-scale (four corners)

Parameters	Value	Unit	Comment
Asfc	5.32		
Smfc	6.95	μm ²	
HAsfc9	0.805		(3x3)
HAsfc81	1.42		(9x9)